



PLATE-GUARD



INSTALLATION MANUAL

VERSION #5 - 15 MAY 2023

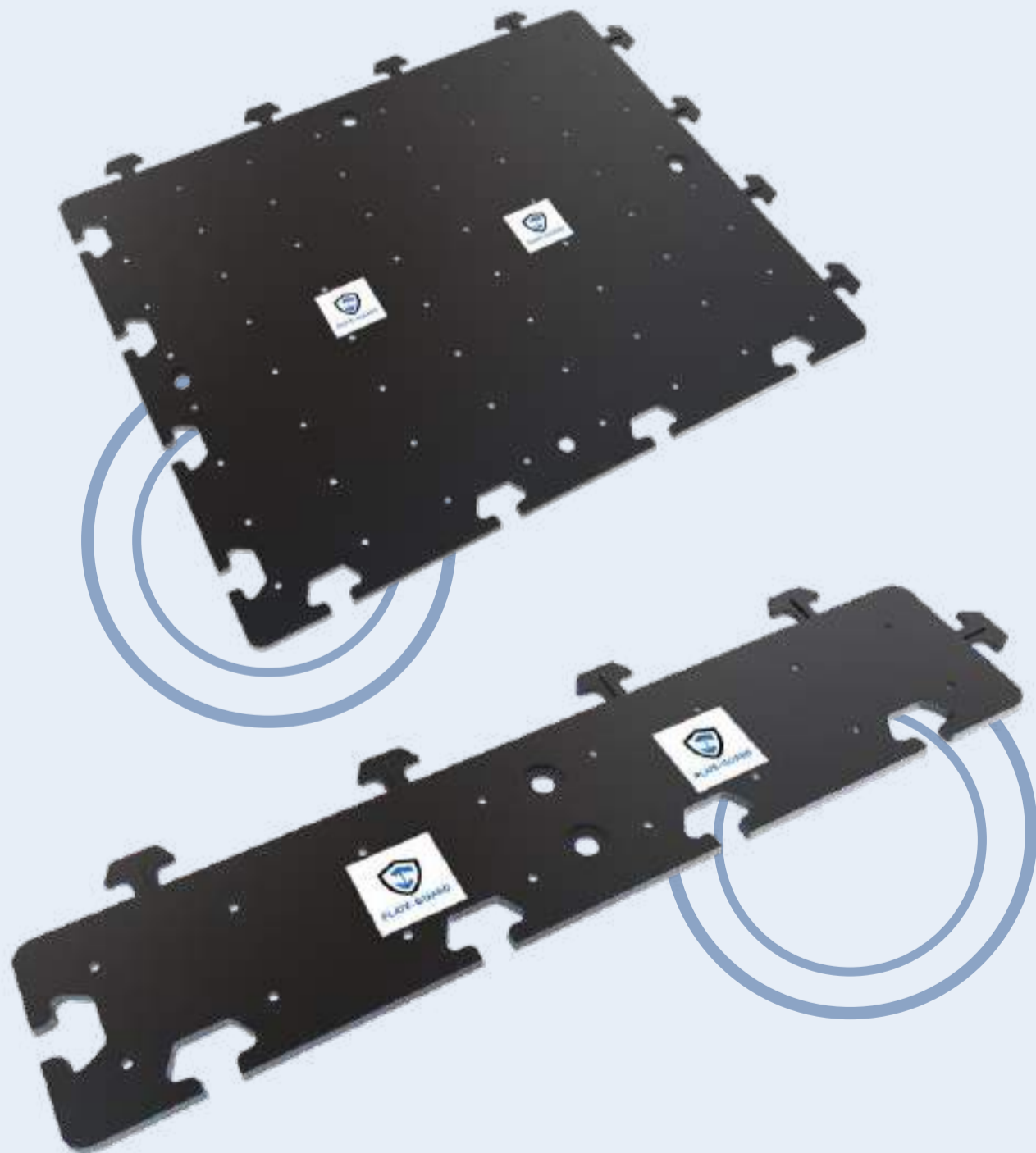
TABLE OF CONTENTS

	PAGE
Product Presentation.....	1
1.A Product Design.....	1
Product Features.....	2
2.A Peg Holes.....	3
2.B Non-Slip Surface.....	4
Dimensions.....	5
Assembly.....	6
Installation Guidelines.....	7
Ease of Use.....	8
8.A Damage and Repair.....	8

PRODUCT PRESENTATION

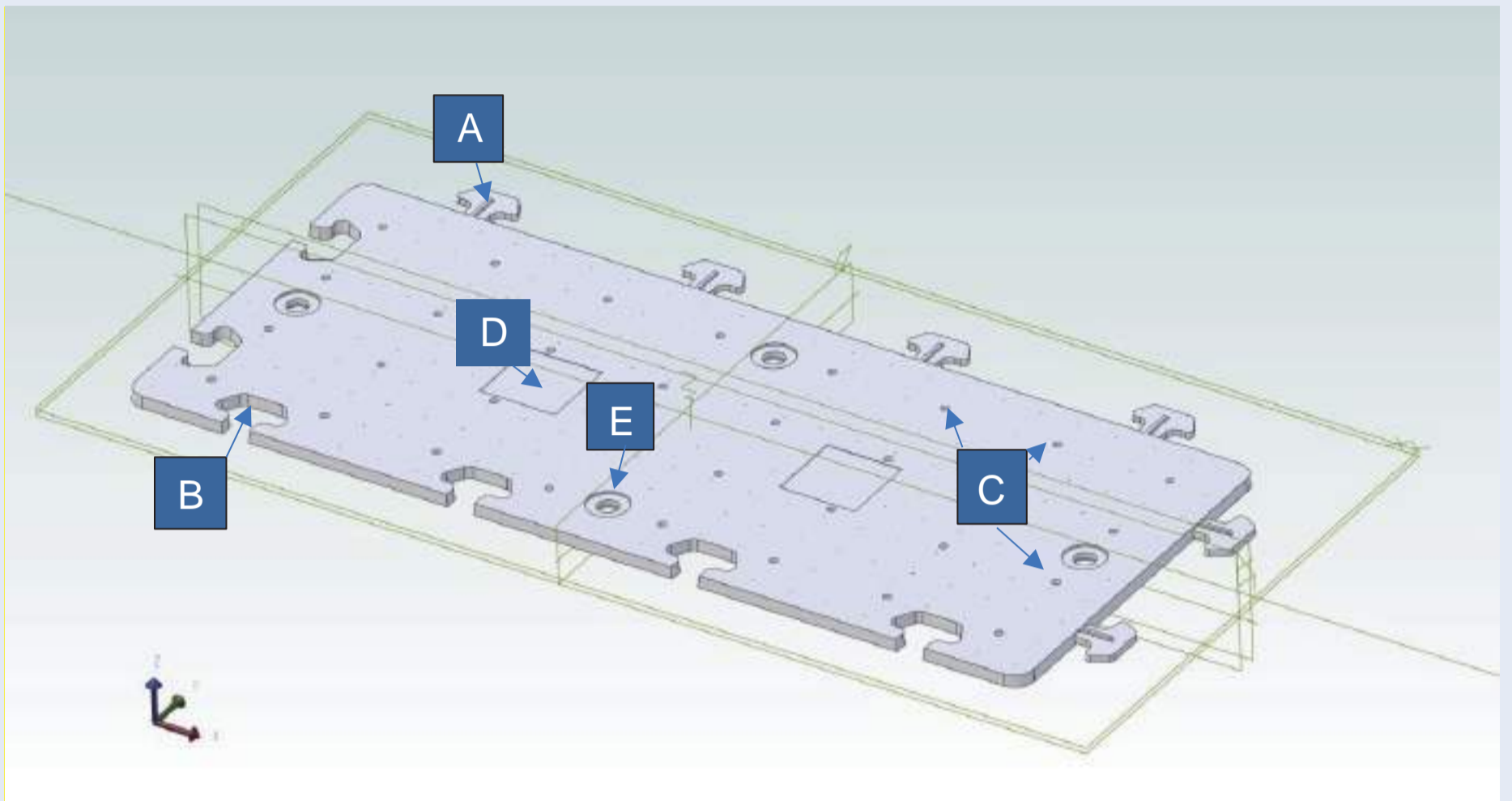
Plate-Guard is a polyethylene plate designed to cover and protect a pipeline asset from third-party interference and damage. Approximately half of all pipeline accidents occur because of third-party interference which is predominantly the excavator bucket of a mechanical digger hitting the pipeline by mistake. The best defense from third-party interference is to place a barrier between the excavator and the pipeline asset. Plate-Guard is the optimal shield to protect a pipeline asset from accidental interference.

PRODUCT DESIGN



PRODUCT FEATURES

Plate-Guard covers connect together securely and can navigate bends and accommodate elevation differences.



A Male Connection Point

B Female Connection Point

The plate covers connect easily together with male part fitting into the female connector creating a robust, solid and continuous protection layer.

C Drainage holes

The plate has 3mm diameter drainage holes over the surface to prevent the build-up of water.

D Customer Information Indentations

Each plate cover has two indentations 100mm x 100mm (4 x4) designed for a customized, adhesive sticker. The sticker is a hazard warning and can contain the asset owner's information, web site and emergency telephone number.

E Peg Holes

The plates overlap and a short peg is inserted into the peg hole. This allows plate rotation and keeps the line of plates continuous without gaps.

PEG HOLES

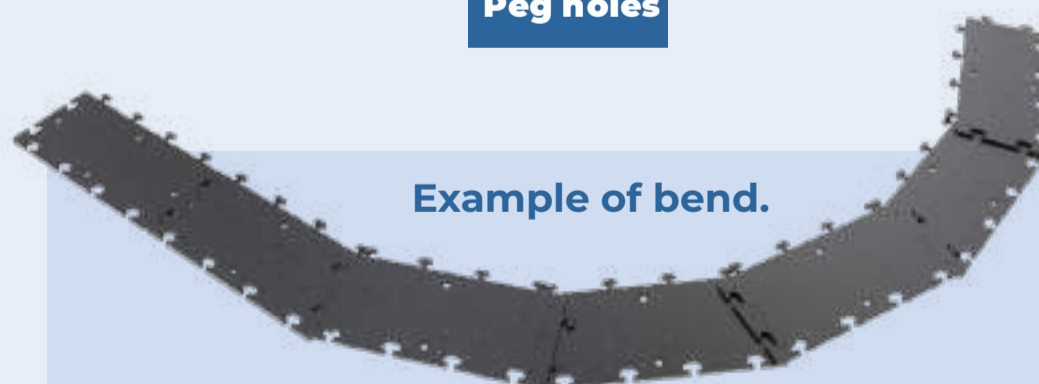
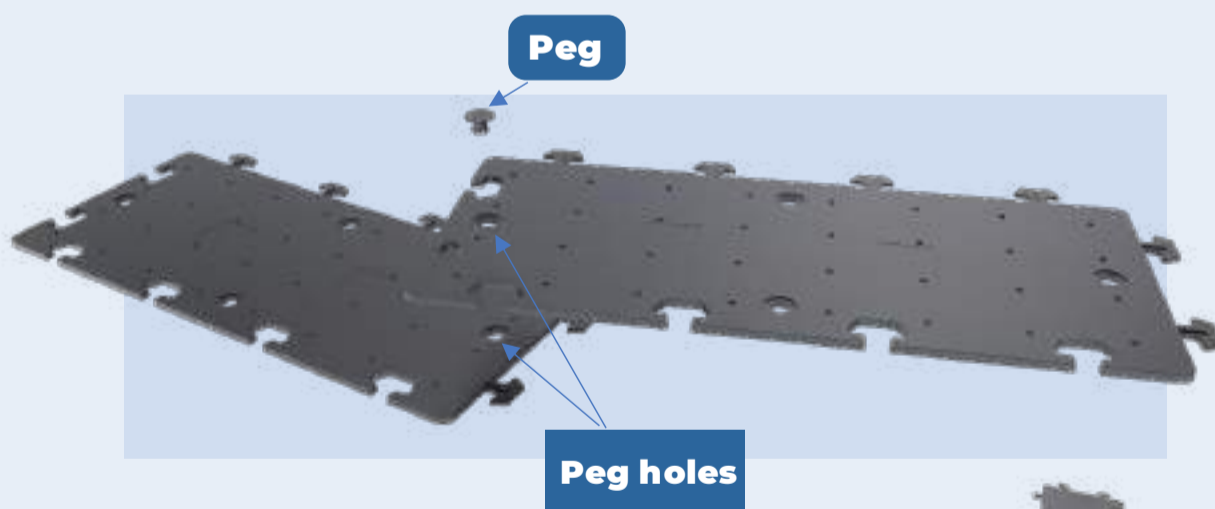
To make the cover plates bend and follow the exact route of the pipeline it is anticipated that the plates over-lap and a short peg is inserted into the peg holes to keep the line of plates solid and continuous without gaps. (See picture below).

1. Place the second plate over the edge of the first plate so that the peg holes line up.
2. Insert the plastic peg.
3. Turn the plate cover to the desired angle.
4. When the bend is complete revert to using the plates in the normal way with the male and female connection points.

Please note that the peg holes are situated at 75mm from the edge of the cover-plate. Each overlap means an effective loss of 75mm.



Peg with hairpin clip for fastening the plates together

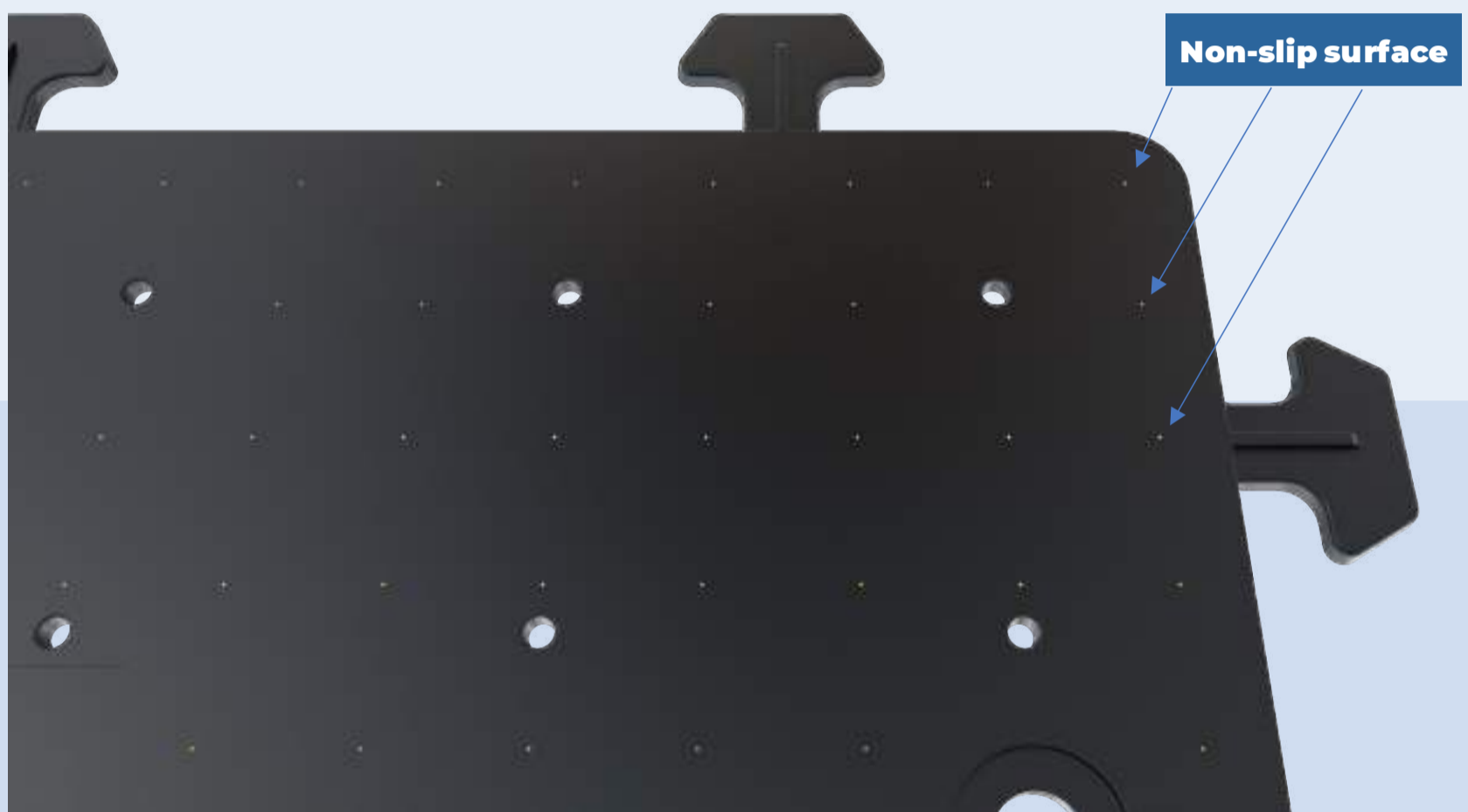


Example of bend.

The plates can be used in either direction – length ways or width ways.

NON-SLIP SURFACE

The plate covers are designed with a non-slip, dotted surface for security.

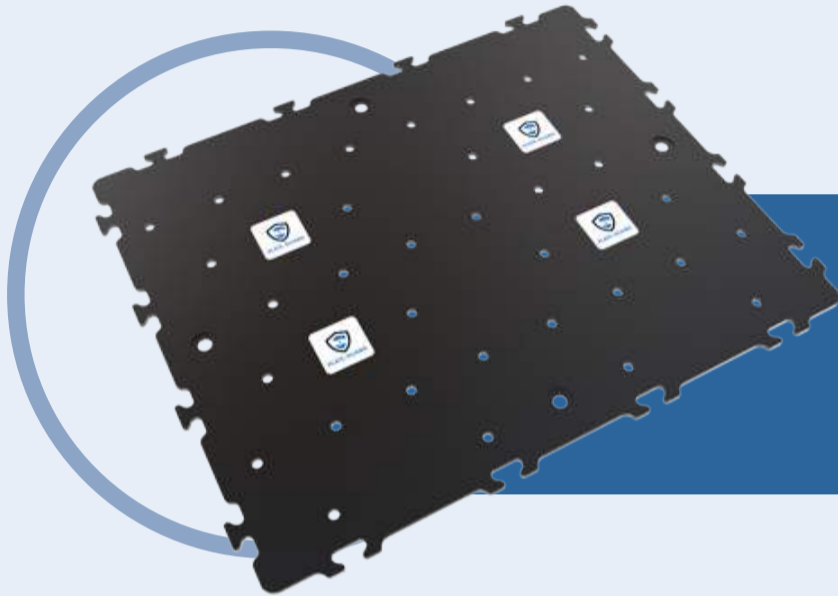


Example of dotted, non-slip surface.



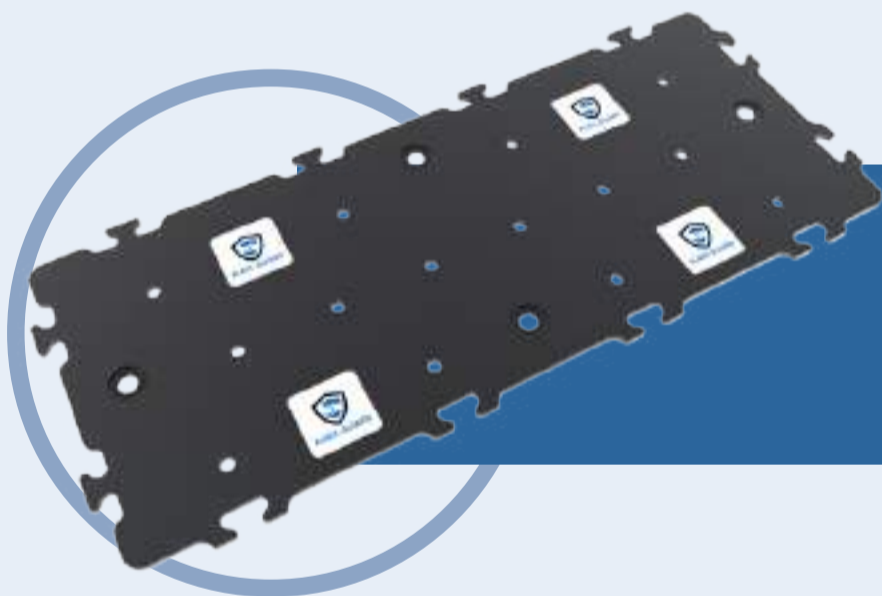
DIMENSIONS

Plate-Guard plate covers are supplied in three dimensions. All dimensions are shown in millimeters and inches



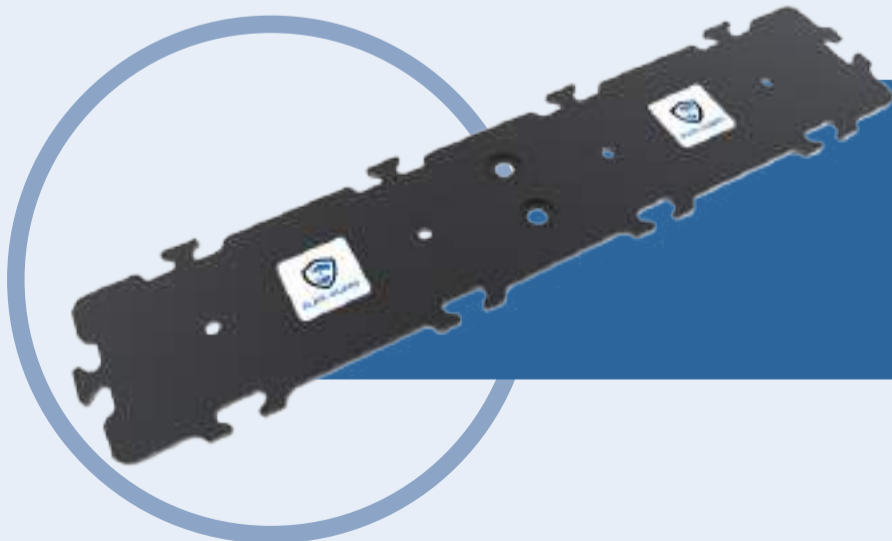
PG1

Width	1000 40"
Length	1200 48"
Thickness	10 0,4"



PG2

Width	500 20"
Length	1200 48"
Thickness	10 0,4"

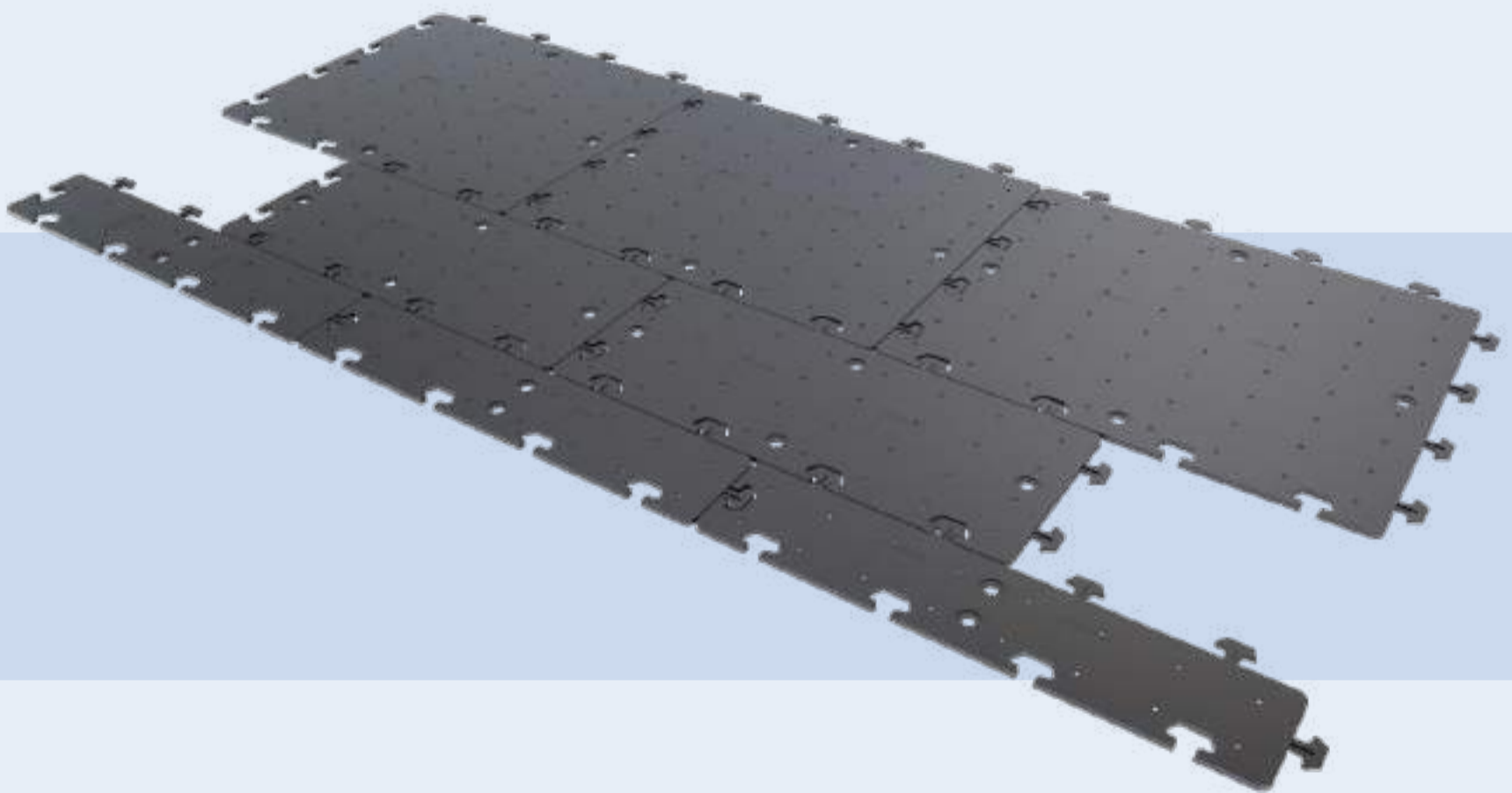


PG3

Width	1000 10"
Length	1200 48"
Thickness	10 0,4"

ASSEMBLY

Plate-Guard cover plates are modular. They can be fitted together in different ways to provide the optimal dimensions to cover and protect the pipeline asset.

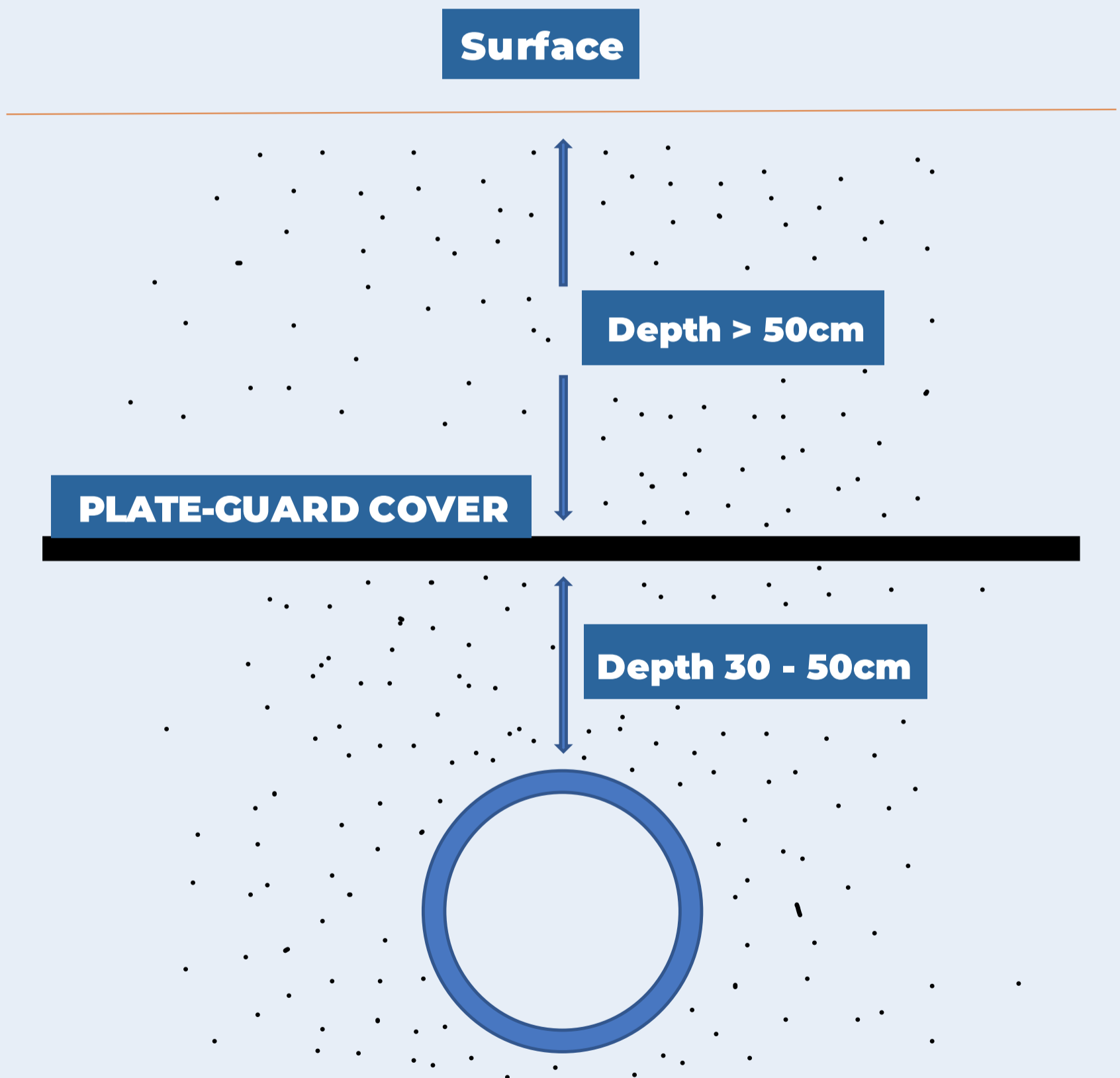


Many different combinations are possible.

INSTALLATION GUIDELINES

The Plate-Guard cover is placed horizontally above the pipeline at a distance of between 30 – 50 cm. The distance of extension over the pipe diameter is 25% each side. For example, a pipe diameter of 1000mm requires a plate dimension of 1500mm. Each side of the pipe diameter needs an extension length of 25% = 250mm.

- Left and right extensions (2 x 250mm) equals 500mm
- Plate-Guard total recommended width is 1500mm
- Pipe Diameter is 1000mm
- Extensions left and right are both 250mm.



EASE OF USE

Being very lightweight Plate-Guard products may be manipulated easily by hand. It is recommended that operators wear gloves. The plate covers have beveled edges. The plates can be installed by one or two people.

DAMAGE AND REPAIR

If a Plate-Guard cover is accidentally damaged by a third party such as a mechanical digger the plate(s) may be dug out and replaced.



PLATE-GUARD

ADDRESS:

848 Brickell Ave - Suite 950
Miami, FL. 33131

PHONE:

1 - (305) 921 465

EMAIL:

info@plate-guard.com

FOLLOW US

